

CELL SITE ANALYSIS

cyfor.co.uk

criminal.team@cyfor.co.uk

+44 (0) 207 438 2045



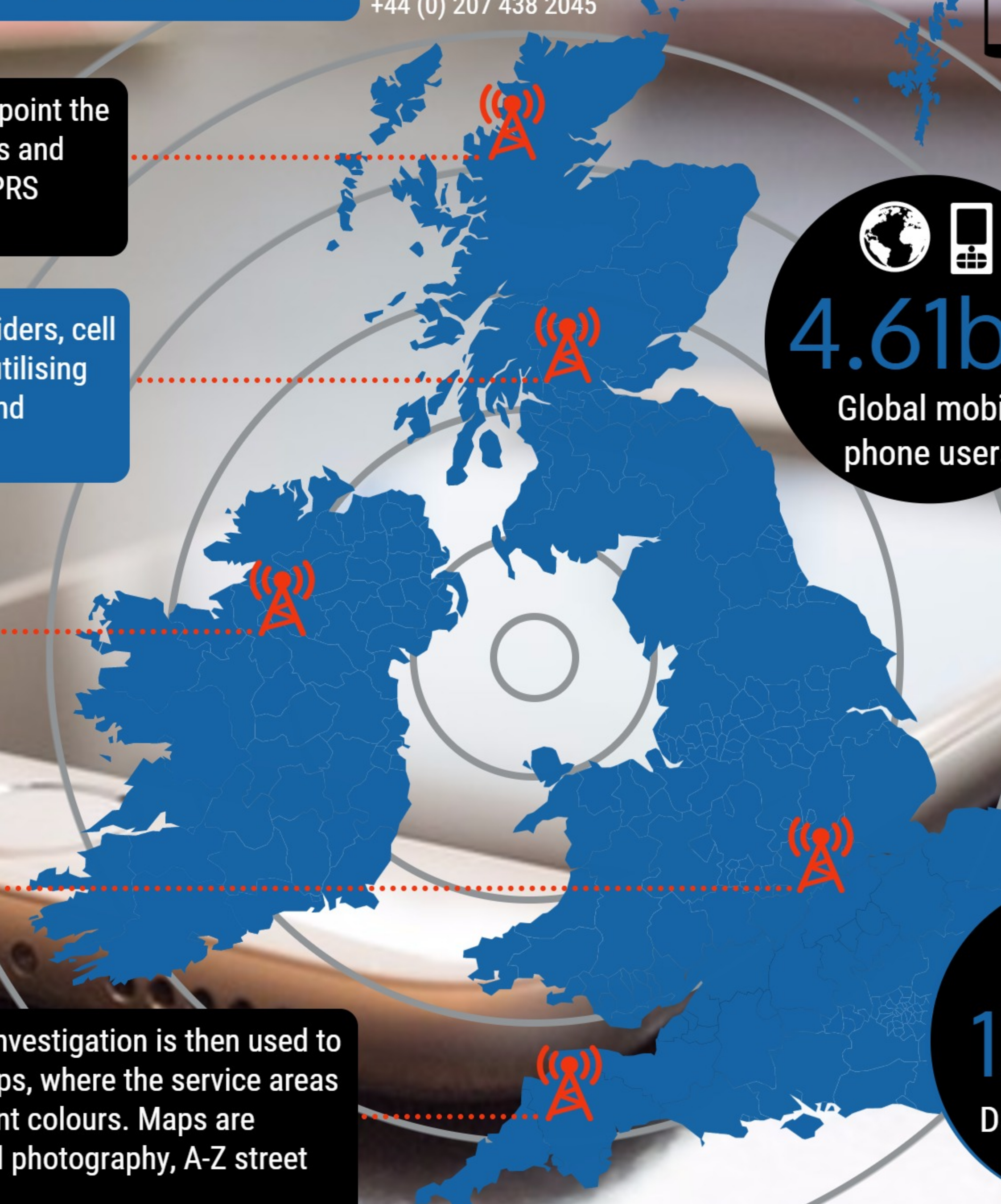
Cell site analysis is a technique used to pinpoint the geographical location of a phone when calls and SMS messages are sent or received or a GPRS session is open.

Using data from mobile phone service providers, cell site experts can measure actual coverage utilising sophisticated data gathering, positioning and analytical tools.

With almost 5 billion mobile phone users globally, being able to determine the movement of a mobile device can be invaluable evidence.

This information can be used to support either the Crown case prosecution or the defence to uphold an alibi.

The data gathered from the phones under investigation is then used to generate detailed reports and coverage maps, where the service areas of individual cell sites are shown as different colours. Maps are available in various formats including aerial photography, A-Z street maps and OS ranges.



4.61bn
Global mobile phone users

8 Trillion
SMS
Texts sent in 2015

12.4bn
Daily calls made worldwide